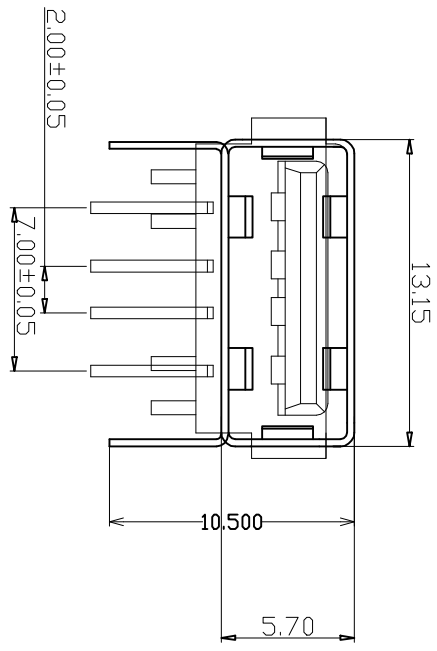
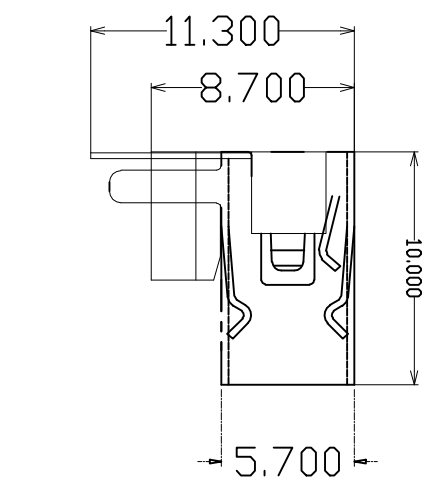
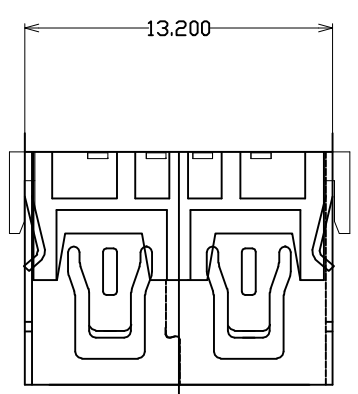
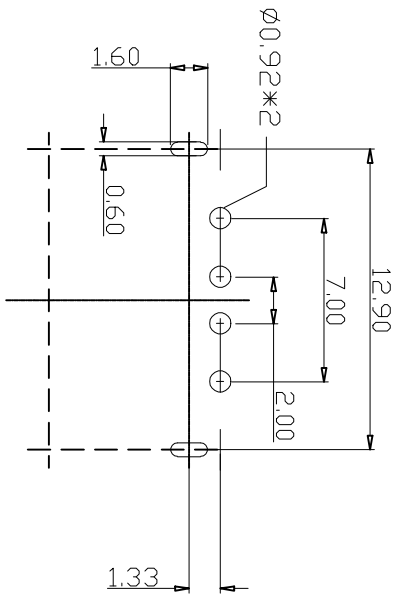


NO.	PART NO.	NAME	MATERIAL	COLOR	QTY
1	AP2-CA01X2000		Copper Alloy/SPCC		1PCS
2	AP2-AD001X110		PBT		1PCS
3	AP2-BA201X0000		Copper Alloy		4PCS

REV	DESCRIPTION	DATE
1	试行版	2011.08.26
2	重新修订图面	2011.09.09



- NOTES:
1. MATERIAL SPECIFICATION
 - 1) INSULATION MATERIAL THERMOPLASTIC.
 - 2) SHELL: COPPER ALLOY/SPCC, T: 0.30mm
 - PLATING: NICKEL
 - 3) TERMINAL: COPPER ALLOY, T: 0.25mm
 - PLATING: GOLD/TIN PLATED.
 2. ELECTRICAL CHARACTERISTIC:
 - 1) INSULATION RESISTANCE: 100MΩ MIN.
 - 2) CONTACT RESISTANCE: 30mΩ MAX.
 - 3) WITHSTANDING VOLTAGE: 500V AC.
 3. MECHANICAL CHARACTERISTICS:
 - 1) INSERTION FORCE: 3.57kgf MAX.
 - 2) EXTRACTION FORCE: 1.02kgf MIN.
- ORDERING INFORMATION



TOLERANCES				
I.	II.	III.	IV.	V.
A ± 0.20	± 0.10	± 0.05	± 0.03	± 1°
B ± 0.50	± 0.20	± 0.10	± 0.05	± 2°
C				

MATERIAL: SHK-20106	UNIT: M/M	THIRD ANGLE
SUPERFICTICS:	SCALE: 1:1	
COLOR: 甲	REV: A	

深圳市虹康科技有限公司

DRAWING BY: SU	Brand/Model: USB A/P 一体10.0 4个孔叉脚(侧边)SMT
CHECK BY: QING	PART NAME:
APPROVED: LEE	DRAWING NO.
DATE: 2011.09.09	USER'S OR TOOLING NO.