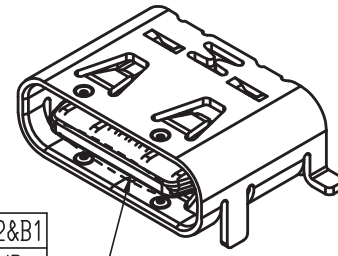


INTERFACE (FRONT VIEW)

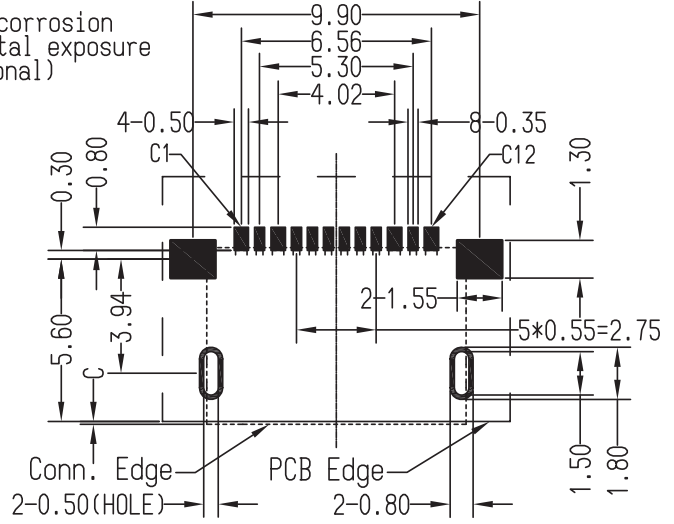
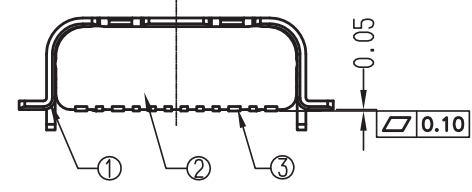
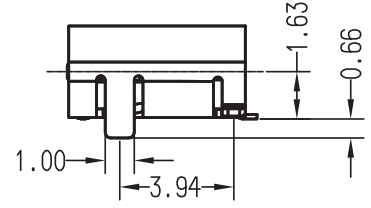
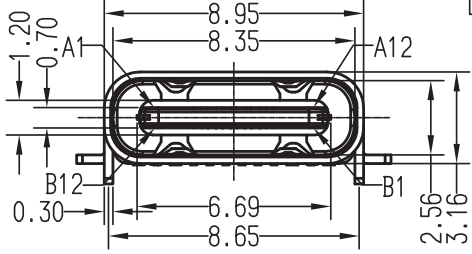
| | | | | | | | | | | | |
|-----|-----|-----|------------------|------|----|----|------|------------------|-----|-----|-----|
| A1 | A2 | A3 | A4 | A5 | A6 | A7 | A8 | A9 | A10 | A11 | A12 |
| GND | / | / | V _{BUS} | CC1 | D+ | D- | SBU1 | V _{BUS} | / | / | GND |
| GND | / | / | V _{BUS} | SBU2 | D- | D+ | CC2 | V _{BUS} | / | / | GND |
| B12 | B11 | B10 | B9 | B8 | B7 | B6 | B5 | B4 | B3 | B2 | B1 |

PIN ASSIGNMENT:

| | | | | | | | | | | | | |
|-------------|--------|-----|------------------|----|------|----|----|-----|----|------------------|------|--------|
| Pin No. | A1&B12 | A5 | A4&B9 | A6 | B8 | B7 | B6 | B5 | A7 | A9&B4 | A8 | A12&B1 |
| Signal Name | GND | CC1 | V _{BUS} | D+ | SBU2 | D- | D+ | CC2 | D- | V _{BUS} | SBU1 | GND |
| PCB PAD No. | C1 | C2 | C3 | C4 | C5 | C6 | C7 | C8 | C9 | C10 | C11 | C12 |

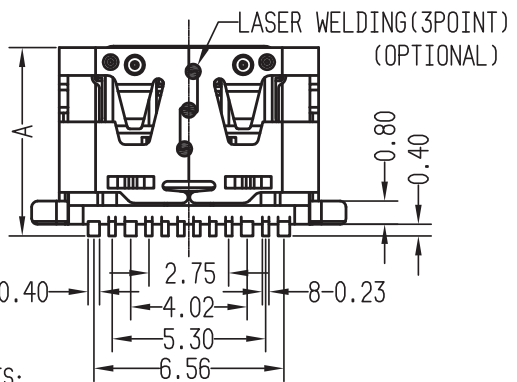


| Rev. | ECN No. | DESCRIPTION |
|------|------------|-------------|
| X1 | 2018/10/18 | Initial |
| X2 | 2018/10/25 | Update P/N |



RECOMMENDED P.C.B LAYOUT (COMPONENT SIDE)

PCB THICKNESS: 0.80±0.05mm
DEFAULT TOLERANCE: ±0.05mm



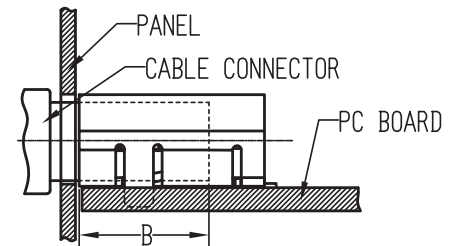
PRODUCT NO.: KLT.11 2 - 16 * * - 0 2 4 (*)

Prefix Code
Series Code
USB Type C Conn.
Connector Type
Pin Number 16: 16Pin
Plating 1:Gold flash
2:15u"Au
3:30u"Au
7:Gold flash & Black Shell
Extension Code

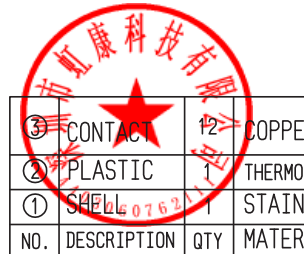
Spec.Code(Optional)
1:Spring stronger
2:Laser Welding
3:Anti-corrosion
Lead Free Code
4=Halogen Free
Package Code
2=Tap/Reel
Body&Terminal Type:
0=Right Angle&SMT

- NOTES:
- ELECTRICAL CHARACTERISTICS:
 - CONTACT CURRENT RATING: 5.0A FOR V_{BUS} PIN AND GND PIN. 0.25A MIN FOR ALL OTHER TERMINALS.
 - CONTACT RESISTANCE: 30MILLIOHM MAX FOR V_{BUS} AND GND CONTACTS. 50MILLIOHM MAX FOR ALL OTHER CONTACTS.
 - DIELECTRIC WITHSTANDING VOLTAGE: 100 VRMS AC MIN.
 - INSULATION RESISTANCE: 100 MEGOHMS MIN.
 - MECHANICAL CHARACTERISTICS:
 - CONNECTOR INSERTION FORCE: 5~20N. AT A MAXIMUM RATE OF 12.5MM PER SECOND.
 - CONNECTOR EXTRACTION FORCE: 8~20N. AT A MAXIMUM RATE OF 12.5MM PER SECOND.
 - DURABILITY: 10000 CYCLES.
 - OPERATING TEMPERATURE: -55°C TO +85°C.
 - RECOMMENED PROCESS: IR REFLOW 260°C, 3~5SECONDS.
 - THE CONNECTOR IS RoHS COMPLIANT.

| ITEM | PART No. | Dim A | Dim B | Dim C |
|------|---------------------|-------|-------|-------|
| 1 | KLT.112-16*D-024(*) | 6.50 | 4.40 | 0.10 |
| 2 | KLT.112-16*E-024(*) | 6.80 | 4.70 | 0.40 |
| 3 | KLT.112-16*F-024(*) | 8.30 | 6.20 | 1.90 |



RECESSED MOUNTING CONFIGURATION



| ③ CONTACT | 12 COPPER ALLOY | NICKEL UNDERPLATING OVER ALL, GOLD PLATING AT CONTACT AREA AND TERMINATION. | | |
|--------------|--------------------------|---|----------|-----------|
| ② PLASTIC | 1 THERMOPLASTIC UL 94V-0 | MOLDED COLOR: BLACK. | | |
| ① SHELL 0762 | 1 STAINLESS STEEL | TAB WITH LEAD FREE TIN ALLOY. | | |
| NO. | DESCRIPTION | QTY | MATERIAL | TREATMENT |

TOLERANCES UNLESS OTHERWISE SPECIFIED

| | | | |
|-----|-------|------|-----|
| X. | / | .XXX | / |
| .X | ±0.25 | X.° | ±1° |
| .XX | ±0.15 | .X° | |

深圳市虹康科技有限公司

SERIES: USB TYPE C TITLE: USB2.0+PD, SMT TYPE

APPD: Be1 2018/10/25 PART No.:

CKD: Bruce 2018/10/25 DWG No.:

DR: John 2018/10/25 CC0009

| | | | | | |
|-------|-------|--------|-------|-------|------|
| UNITS | MAT'L | FINISH | SCALE | SHEET | REV. |
| MM | / | / | FULL | 1/1 | X2 |

THESE DRAWINGS AND SPECIFICATIONS ARE THE PROPERTY OF SHENZHEN KLT TECHNOLOGY Co.,LTD. AND SHALL NOT BE REPRODUCED, COPIED OR USED IN ANY MANNER WITHOUT THE PRIOR WRITTEN CONSENT OF SHENZHEN KLT TECHNOLOGY Co.,LTD.